



Data Collection, Process Automation & Reporting Mobilized for

ENVIRONMENTAL HEALTH & SAFETY

Mobile Epiphany provides **Touch Mobile for EHS**, an application to mobilize your data collection processes and automate reports for any of your Environmental Health & Safety requirements. Technicians and engineers can use our easy-to-use software specifically designed for field operators to perform inspections, data collection and automate reporting. With a full cloud-based reporting engine for enterprise reporting, back office users have the ability to request and run customized reports directly from their mobile devices, PC and web browser.

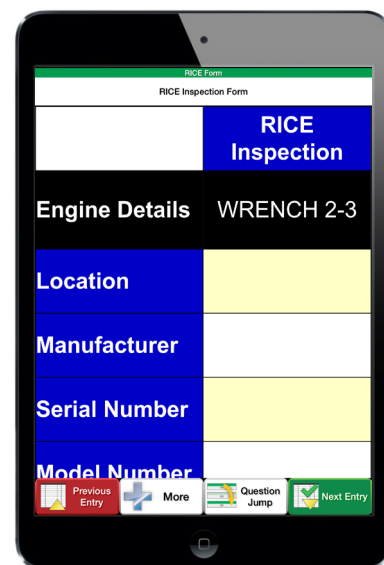
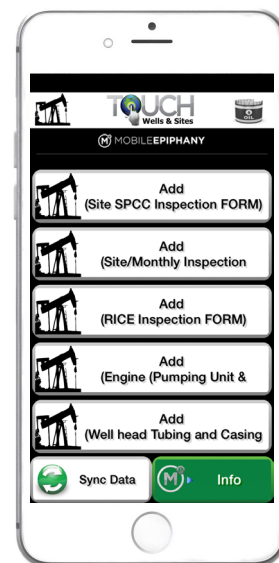
Touch Mobile for EHS is a powerful solution that can be quickly customized to capture your specific processes and requirements.

Touch Mobile for EHS Benefits:

- Technicians and Engineers can quickly and easily collect data regarding EHS compliance, regulatory, and internal requirements
- Effectively conduct site-wide EHS inspections
- Lookup sites, assets, components, data related to historical inspections and complete or incomplete repair attempts
- Auto-trigger email notifications, work orders, report creation and distribution based on rules set within workflow engine
- Reference schematics, repair manuals and any other documents required on the mobile device
- Easily create report templates and sort, filter, query and export data
- Associate assets, processes, forms and sites with the proper parent-child relationships

877.318.7215

WWW.MOBILEEPIPHANY.COM



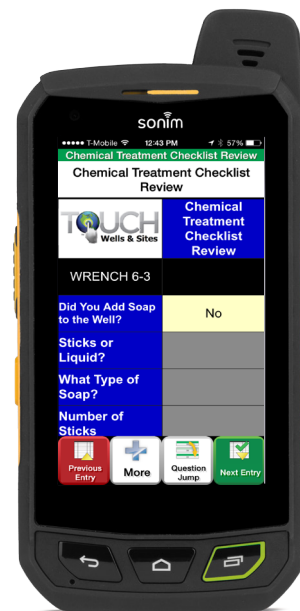


Touch Mobile for EHS Benefits Continued:

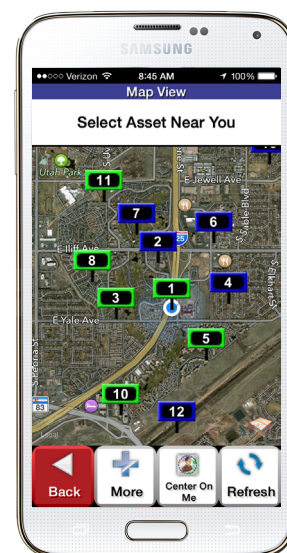
- Use our out-of-the-box application or rapidly modify apps to meet your specific requirements
- Configure and deploy and make additional modifications quickly as required
- Intuitive, touch-based, mobile user interface requires minimal training
- The same mobile application platform can be used to mobilize and automate all processes and reporting throughout your organization

Touch Mobile for EHS Features:

- Industry standard forms and custom forms at your fingertips
- Collect data and conduct asset lookup by barcode, direct part marking, or asset attribute, even when no network connection is present
- All data is stored in a centralized database, works as a stand-alone system or can share data with nearly any system
- Online or offline application and process operation – network connectivity not required
- Automatically send and receive data to remote mobile devices the moment a device is connected to a network
- Capture photos, signatures, audio and video. Photos can be rotated, cropped, and sketched on
- Role based security and permissions – users only see data relevant to their role or geographical location
- Work Crumbing® technology ensures that all data captured is recorded with date, time and GPS location for event tracking and worker productivity analysis
- Runs on a variety of mobile devices including iPhone, iPad (iOS), Android, Windows and Blackberry devices



Touch Mobile for EHS is the perfect field-based solution for compliance and regulatory data collection requirements in any industry.



877.318.7215

WWW.MOBILEEPIPHANY.COM

