



Cataloging, Inspections, Process Automation
& Reporting Mobilized for

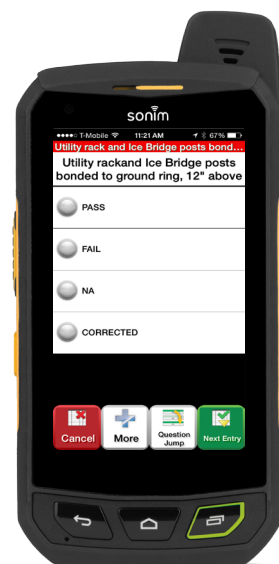
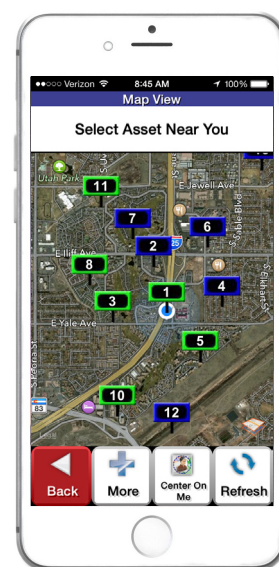
CELL SITE INSPECTIONS

Mobile Epiphany provides **Touch Cell Sites**, an application to mobilize your data collection processes and automate reports for building, modifying, maintain and insuring towers. Coordinators can use our software on a variety of mobile devices to reduce the time spent collecting documents, identifying and labeling photos, to assemble and distribute Closeout packages directly to client's databases. No more spreadsheets, paper forms, extra cameras and equipment or redundant data entry into multiple systems.

Touch Cell Sites is a powerful solution that can be quickly customized to capture your specific processes and requirements.

Touch Cell Sites Benefits:

- Intuitive site-wide inspections to easily catalog the status of all parts
- Lookup sites, assets, components, data related to historical inspections and complete or incomplete repair attempts
- Automate work orders for paint touch-up, hardware tightening, small hardware replacement and re-lamping
- Reference schematics, repair manuals and any other documents required on the mobile device
- Easily create report templates and sort, filter, query and export data
- Associate assets, processes, components, forms and sites with the proper parent-child relationships
- Auto-trigger email notifications, work orders, report creation and distribution based on rules set within workflow engine



877.318.7215

WWW.MOBILEEPIPHANY.COM



Touch Cell Sites Benefits Continued:

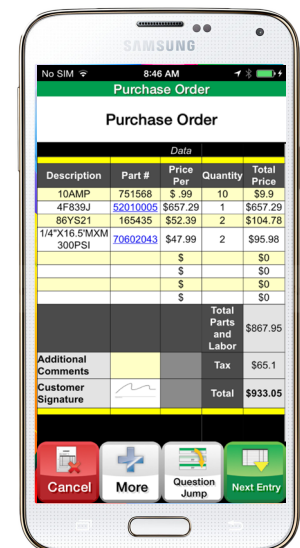
- Intuitive, touch-based, mobile user interface requires minimal training
- Use our out-of-the-box application or rapidly modify apps to meet your specific requirements
- Configure and deploy and make additional modifications quickly as required
- The same mobile application platform can be used to mobilize and automate all processes and reporting throughout your organization

Touch Cell Sites Features:

- Industry standard forms and custom forms at your fingertips
- Collect data and conduct asset lookup by barcode, direct part marking, or asset attribute, even when no network connection is present
- All data is stored in a centralized database, works as a stand-alone system or can share data with nearly any system
- Online or offline application and process operation – network connectivity not required
- Automatically send and receive data to remote mobile devices the moment a device is connected to a network
- Capture photos, signatures, audio and video, even manipulate photos, rotate, crop, draw directly on photos and maintain original
- Role based security and permissions – users only see data relevant to their role or geographical location
- Work Crumbing® technology ensures that all data captured is recorded with date, time and GPS location for event tracking and worker productivity analysis
- Runs on a variety of mobile devices including iPhone, iPad (iOS), Android, Windows and Blackberry devices



Mobile Epiphany's highly customizable software platform is the perfect field-based solution to mobilize data collection and reporting for cell site inspections!



877.318.7215

WWW.MOBILEEPIPHANY.COM

